

SANITATION

DOMETIC W-SERIES WALL HOLDING TANKS

Experience Dometic's Wall Tank Series for marine waste holding tank applications. It's corrosion-proof, odor free and built with high-strength ABS for long-lasting durability. The HTS-W model with integrated VacuMax pump provides the power of vacuum to save water with every flush. Multiple discharge outlets eliminate the need for complex plumbing. Basic tank design models offer boat builders flexibility when planning vessel layouts and toilet technologies.

ODOR FREE
FULLY SEALED AND
FACTORY-TESTED

EASY TO INSTALL
PRE-PLUMBED AND
READY TO GO

TECHNOLOGY FLEXIBLE
BASIC AND VACUMAX
INTEGRATED MODELS



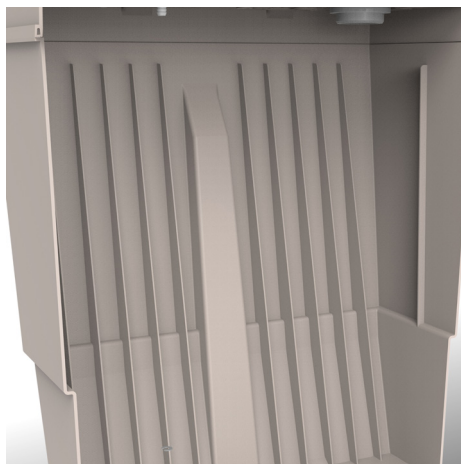
Mobile living made easy.

 **DOMETIC**



MODEL:	HT-W-B	HT-W	HTS-W
Capacity (Gal/Ltr)	15.4/60	15.4/60	12.8/50
Empty Weight (lbs/Kg)	14 lbs/6.35 kg	16 lbs/7.26 kg	27 lbs/12.25 kg
Max Weight (lbs/Kg)	146 lbs/66.4 kg	148 lbs/67.3 kg	137 lbs/62.3 kg
Inlet Plumbing			
ID	1.5 in. (38mm) sanitation hose or PVC pipe		
Vertical Run	N/A	N/A	6 ft./1.8 m max
Horizontal Run			20 ft./6.1 m max
Discharge Plumbing			
Dockside Pumpout	1.5 in. (38mm) sanitation hose or PVC pipe		
Gravity Drain	2.0 in. (51mm) Sanitation hose or PVC pipe		
	Hose Fitting	Ball Valve with Hose Fitting	
Tank Vent			
Hose ID	5/8 in. (16 mm) Sanitation hose		
Accessories			
Level Indication	N/A	Full & 3/4 Full - Integrated Float sensors	
	N/A	Status Panel	
Vacuum Relief Valve	No	Yes	
Overfill Protection	No	Optional	
Electrical			
Power Draw (Average)	N/A	0.15 amp/12VDC 0.09 amp/24VDC	6 amp/12VDC 3 amp/24VDC
Circuit Breaker/fuse	N/A	1 amp/12VDC 1 amp/24VDC	10 amp/12VDC 5 amp/24VDC
Toilet Compatibility	Most Manual and Macerator Toilets		Any VacuFlush Model

TANK VALUE FEATURES



INNOVATIVE TANK DESIGN

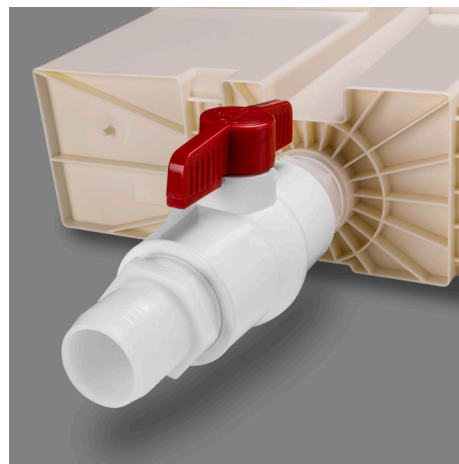
Internal Paddle Ribs

- Strengthens the tank
- Vessel movement mixes contents
- Helps break down solids with no moving parts



MOLDED-IN RESTRAINING STRAP FEATURES

- Standardizes Tank securing (top and bottom)



GRAVITY DRAIN (HTS-W & HT-W)

- Ball valve with hose fitting
- Reduces standing sewage in drain hose
- Extends life of hose (odor permeation)
- Basic hose fitting (not shown)(HT-W-B)



TANK STATUS PANEL (HTS-W & HT-W)

- Lights up when the tank is 75% full
- Reduces the probability of overfilling

VACUMAX PERFORMANCE FEATURES (HTS-W)



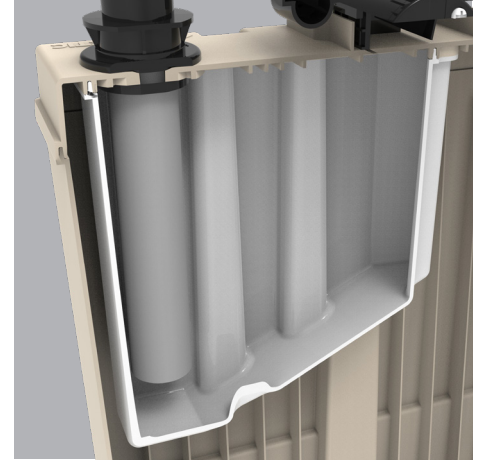
INVERTED VACUUM PUMP

- More efficient than VacuFlush pumps
- 20 second vacuum reset time
- Easy pump removal for service
- Reduced maintenance
- Extended life



INNOVATIVE PUMP VALVE CARTRIDGE

- Encapsulated dual valve design
- Self-sealing and locking by hand
- Extends life of valves



VACUUM RESERVOIR OPTIMIZATION

- Geometry optimized pump efficiency
- Resists any material buildup
- Hermetically sealed for optimal reliability

ODOR-FREE SYSTEM

- Hose to toilet remains mostly empty
- Reduces odor permeation
- Extends life of hose

