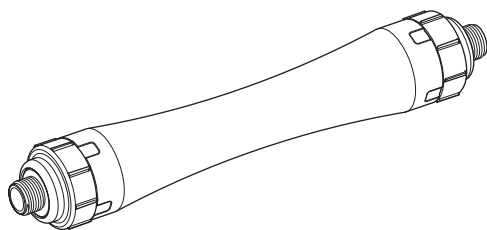


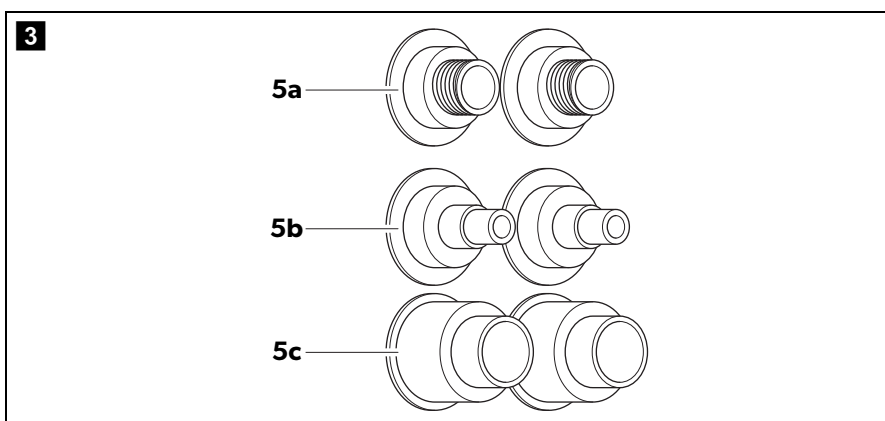
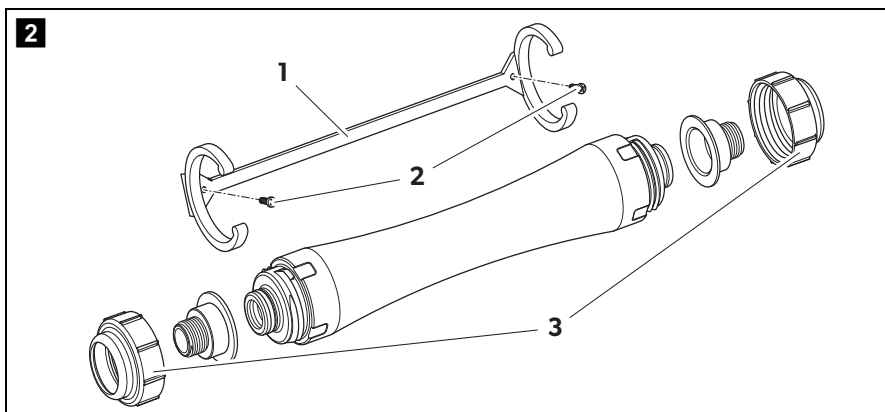
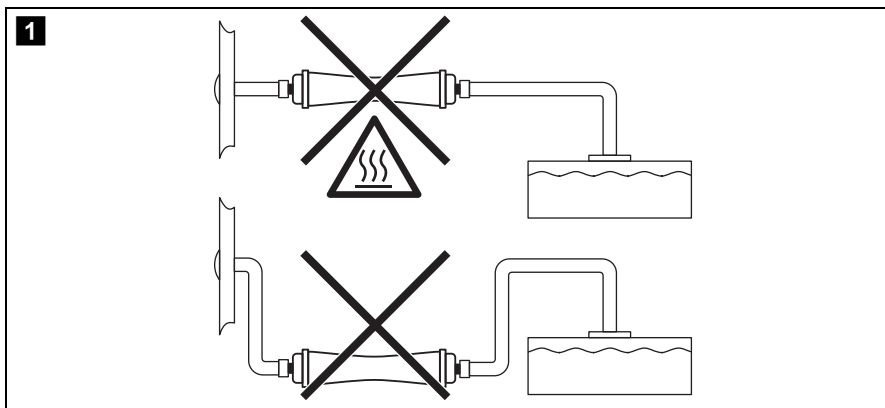
DOMETIC **SANITATION** **ACCESSORIES**

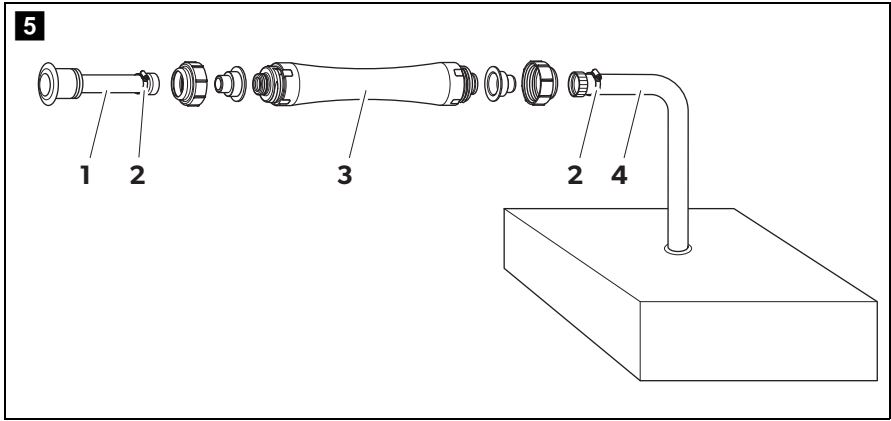
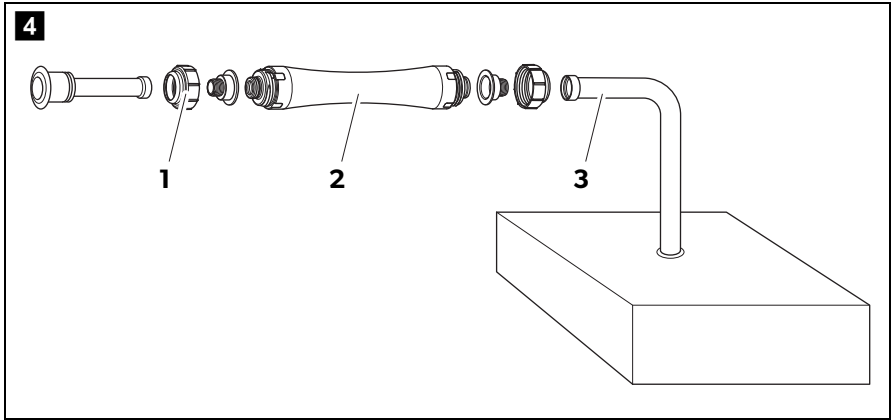


DVF Holding Tank Vent Filter

EN	Ventilation filter Installation and Operating Manual 4
DE	EntlüftungsfILTER Montage- und Bedienungsanleitung 9
FR	Filtre d'aération Instructions de montage et de service 14
ES	Filtro de desaireación Instrucciones de montaje y de uso 19
PT	Filtro de ventilação Instruções de montagem e manual de instruções 24
IT	Filtro di sfiato Istruzioni di montaggio e d'uso 29
NL	Ontluchtingsfilter Montagehandleiding en gebruiksaanwijzing 34
DA	Udluftningsfilter Monterings- og betjeningsvejledning 39
SV	Ventilationsfilter Monterings- och bruksanvisning 44
NO	Ventilasjonsfilter Monterings- og bruksanvisning 49

FI	Ilmanpoistosuodatin Asennus- ja käyttöohje 54
RU	Воздушный фильтр Инструкция по монтажу и эксплуатации . 59
PL	Filtr odpowietrzający Instrukcja montażu i obsługi 64
SK	Odvzdušňovací filter Návod na montáž a uvedenie do prevádzky 69
CS	Protipachový filtr Návod k montáži a obsluze 74
HU	Szellőztetőszűrő Szerelési és használati útmutató 79





Please read this instruction manual carefully before installation and first use, and store it in a safe place. If you pass on the product to another person, hand over this instruction manual along with it.

Table of contents

1	Explanation of symbols	4
2	Safety instructions	4
3	Intended use	5
4	Inserting the filter.	5
5	Maintenance and cleaning	7
6	Warranty	7
7	Disposal	8
8	Technical data	8

1 Explanation of symbols



CAUTION!
Safety instruction: Failure to observe this instruction can lead to injury.



NOTICE!
Failure to observe this instruction can cause material damage and impair the function of the product.



NOTE
Supplementary information for operating the product.

2 Safety instructions

The manufacturer accepts no liability for damage in the following cases:

- Damage to the product resulting from mechanical influences and excess voltage
- Alterations to the product without express permission from the manufacturer
- Use for purposes other than those described in the operating manual

2.1 General safety



CAUTION!

- Do not use the vent filter for on-board tanks with waste from on-board waste water systems that use chlorine or other strong oxidizing agents.
- Replace the vent filter immediately if the on-board tank overflows accidentally.



NOTE

- Replace the vent filter at the beginning of each boating season for optimum odour control.

3 Intended use

The vent filter is inserted into the vent hose of waste holding tanks and prevents the escape of odours when flushing the toilet.

4 Inserting the filter

4.1 Fitting the filter



NOTICE!

- Do not insert the vent filter underneath or at the same height as the tank (fig. **1**, page 2).
- Do not insert the vent filter near any heat sources (engine blocks, lighting etc.) (fig. **1**, page 2).



NOTE

The vent filter can be fitted at any angle.

- Attach the holder (fig. **2** 1, page 2) with screws (fig. **2** 2, page 2).
- Insert the filter, see chapter "Inserting the filter" on page 6.

4.2 Inserting the filter

- Grease the O-ring on each connector of the vent filter using a lubricant or silicone grease.
- Remove the red stoppers from both connectors of the vent filter.
- Select a suitable adapter:

No. in fig. 3 , page 2	Description
5a	Adapter for thread with Ø 16 mm or 19 mm
5b	Adapter for hose with Ø 16 mm or 19 mm
5c	Adapter for hose with Ø 25 mm or 38 mm

- Screw the selected adapter together with the hose couplings (fig. **2** 3, page 2) on the vent filter.
- Insert the vent filter into the holder so that it latches into place.

For using thread adaptors only

- Check that there are seals (not included in delivery) in the connectors of the hoses.
- Connect the vent hose from the tank (fig. **4** 3, page 3) and the vent hose to the hull vent pipes (fig. **4** 1, page 3) with the vent filter (fig. **4** 2, page 3).
- Tighten the connectors by hand.
- Tighten the connectors further by a 1/4 to 1/2 a turn using a tool.

For using threadless hose adaptors only

- Connect the vent hose from the tank (fig. **5** 4, page 3) and the vent hose to the hull vent pipes (fig. **5** 1, page 3) with the vent filter (fig. **5** 3, page 3).
- Secure the vent hoses on the adapters with hose clips (fig. **5** 2, page 3).

4.3 Removing used filters

- Remove the vent hose from both ends of the old vent filter.
If the old vent filter is connected with hose adapters with a size of 16 mm or 19 mm, they should remain attached to the vent hose.
- Remove the old vent filter from the holder and close the ends with tape.
- Dispose of the old filter in the appropriate recycling waste.

5 Maintenance and cleaning

**NOTICE!**

Do not use sharp or hard objects or cleaning agents for cleaning as these may damage the product.

- Occasionally clean the product with a damp cloth.

6 Warranty

The statutory warranty period applies. If the product is defective, please contact the manufacturer's branch in your country (see the back of the instruction manual for the addresses) or your retailer.

For repair and guarantee processing, please include the following documents when you send in the device:

- A copy of the receipt with purchasing date
- A reason for the claim or description of the fault

7 Disposal

- Place the packaging material in the appropriate recycling waste bins wherever possible.



If you wish to finally dispose of the product, ask your local recycling centre or specialist dealer for details about how to do this in accordance with the applicable disposal regulations.

8 Technical data

	DVF
Ref. no.:	9108849515
Weight:	0.68 kg
Dimensions (L x W x H) :	500 x 89 x 89 mm